

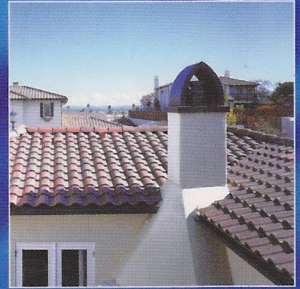
SAN Cora[®]

WE COLOUR THE WORLD



Lemon  fresh Fragrance

WEATHER@Guard 100% acrylic exterior wall finish



- Fungus Resistant
- All Weather Application
- Dirt Resistant
- Self Cleaning, Excellent Durability
- Breathable Film
- Excellent Coverage & Adhesion
- Lead & Mercury Free



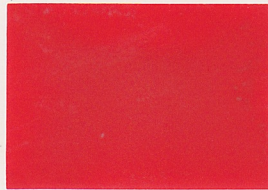
SIRIM
CERTIFIED TO MS 134 : 1989
Certification No : PS 076401



Golden Bull Award 2008 & 2004
Malaysia 100 Outstanding SMEs

WEATHER@Guard

Lemon fresh Fragrance



e. red **WG 9002**



Thunderball Red **WG 9113**



Sandstone **WG 9125**



▲ Cabana Coral **WG 9122**



Rogue Pink **WG 9258**



Fresh Melon **WG 9709**



e. pink **WG 9001**



Rose **WG 9255**



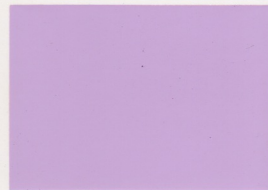
Brown Betty **WG 9123**



Wira Blue **WG 9221**



▲ Summer Blue **WG 9229**



e. purple **WG 9003**



e. blue **WG 9005**



Blue Eye's **WG 9993**



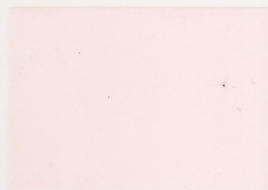
Trendy **WG 9272**



Glacier Blue **WG 9190**



Blue Chiffon **WG 9131**



Rose Fever **WG 9117**

▲ Obsolete colour, available while stock last.

100% acrylic
exterior wall finish

Product Standard : W/WG/9000 Series



- Fungus Resistant
- All Weather Application
- Dirt Resistant
- Lead & Mercury Free

- Self Cleaning, Excellent Durability
- Breathable Film
- Excellent Coverage & Adhesion



Mocha Woods **WG 9658**



Greenish **WG 9191**



Apple Pie **WG 9977**



Vistasik Brown **WG 9655**



Vanilla **WG 9704**



Letture **WG 9149**



Sandstone Mix **WG 9653**



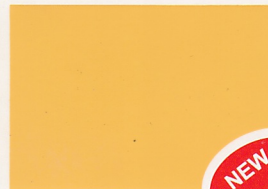
Orion **WG 9273**



Cascade **WG 9269**



Yellow Boy **WG 9898**



Orange Farm **WG 9604**



Coral **WG 9919**



Citron Ice **WG 9147**



Pure Gold **WG 9453**



Orange Lantern **WG 9105**



Cream **WG 9140**



Vanity Fair **WG 9505**



Sunset **WG 9254**

Also available in White **WG 9004**

The colours on this card are as close to actual paint colours as modern printing techniques will allow.



Banana **WG 9138**



Abbeystone **WG 9705**

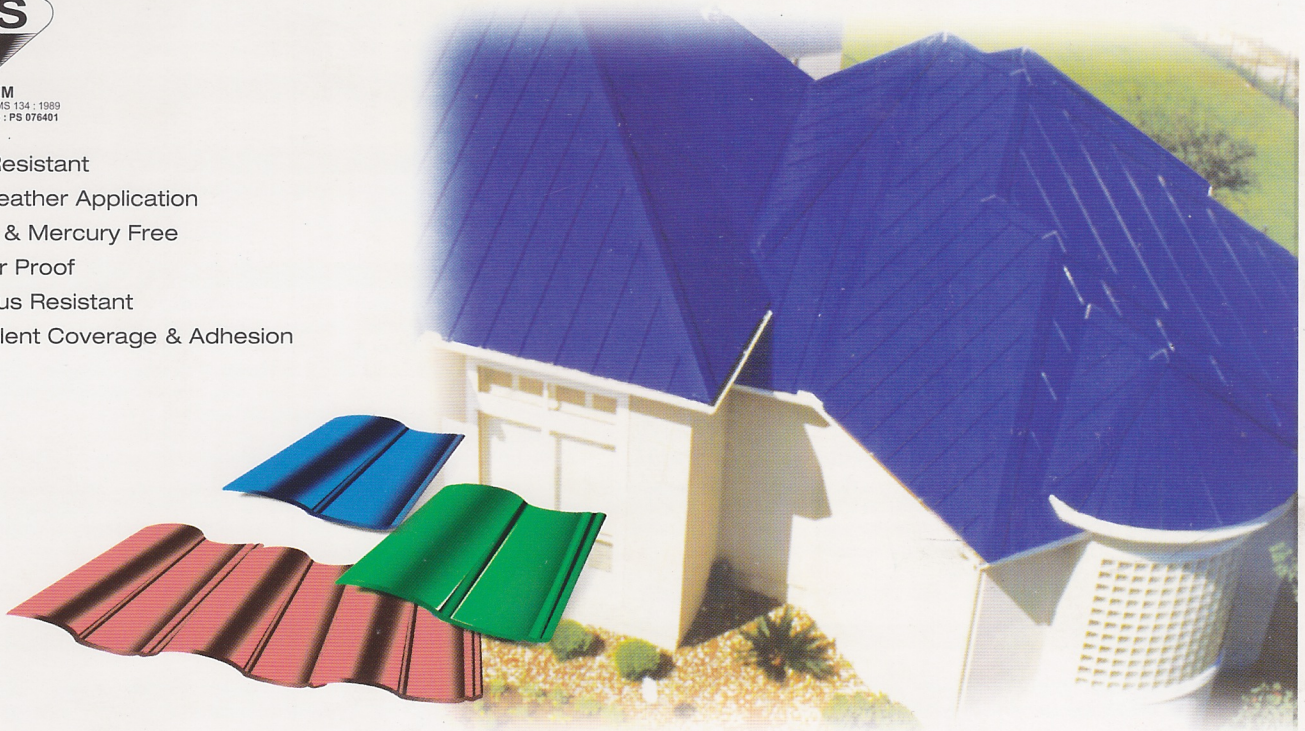
ROOF@Guard

roof coating (waterproof)
Product Standard : W/RG/9000 Series

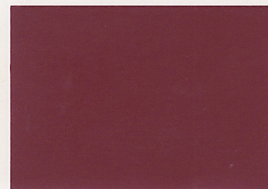


SIRIM
CERTIFIED TO MS 134 : 1999
Certification No : PS 076401

- Dirt Resistant
- All Weather Application
- Lead & Mercury Free
- Water Proof
- Fungus Resistant
- Excellent Coverage & Adhesion



Texas Brown RG 9755



Istana Maroon RG 9522



Casa Blue RG 9445



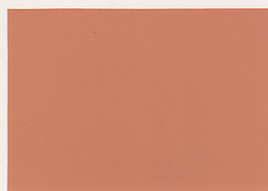
Sahara RG 9652



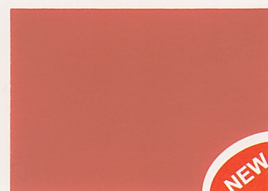
Impian Red RG 9521



Rimba Green RG 9417



Matahari RG 9651



Crayon RG 9144



Idaman Grey RG 9670



ROOF@Guard

roof coating (waterproof)
Product Standard : W/RG/9000 Series



DESCRIPTION

SANcora® ROOF@Guard Roof Coating is a tough and flexible water based coating. ROOF@Guard is based on acrylic copolymer system which produces a tough, durable and flexible paint film and also formulated with fungus and algae resistant properties. It can withstands the effects of harsh environment, constant climatic and temperature variations.

USAGE

Recommended for protection and decoration of roofing where conditions demand better performance than that offered by conventional emulsion paints. It can also be applied on concrete surfaces, slate tile, fair faced bricks and etc.

PACK SIZE

5 litres

COMPOSITION

Pigment	- Organic & Inorganic	Additives	- Thickener, Surface Active Agents & Fungicide
Extender	- Mineral Extender	Vehicle/Solvent	- Water
Binder	- Acrylic Copolymer Emulsion		

TECHNICAL DATA

Texture	- Smooth Low Sheen Finish	Opacity	- $\geq 85\%$
Colour	- A wide range of colours. Please refer to SANcora ® ROOF@Guard colour card (Special colour available upon request but subject to minimum batch size)	Gloss	- $\geq 7\%$
Fineness	- ≤ 75 microns	pH	- 8.0 - 9.0
Specific Gravity	- 1.13 - 1.28 (Depending on colours)	Drying Time	- Surface Dry : ≤ 45 minutes. (Depending on temperature and humidity) Hard Dry : ≤ 2.5 hours. (Depending on temperature and humidity)
Viscosity	- 80 - 90 KU / 27°C	Recommended	- 2 hours
Theoretical Coverage	- Approx. 13 - 15 m ² / litre (Depending on surface evenness)	Recoating Time	
		Thinner/Cleaner	- Water

APPLICATION

Brush / Roller	- For normal use, thinning is not necessary. To assist application, can be thinned 5 - 10% by volume with water.	Airless Spray	- Thin 10 - 20% by volume with water and adjust to requirement.
Conventional Air Spray	- Thin 10 - 20% by volume with water and adjust to requirement.		

SURFACE PREPARATION

General/New

Surfaces must be sound, clean, dry and free from all defective or poorly adhering materials, dirt, grease or wax. To have better finish, rub down surface using suitable abrasive and dust off. For the best result, seal with one coat of appropriate **SANcora**® BLOCK@Guard (refer to Paint Guide)

Previously Painted

Remove all loose, defective and unstable paint film or powdery residue by brushing thoroughly and scraping. High pressured water jet is highly recommended. Treat area affected by mould, lichens, algae and moss with appropriate fungi wash. Repair minor defects and cracks with suitable filler.

PAINT GUIDE

Surface Condition	Primer - To Paint One Coat	Finishing - To Paint Two Coats
New Surfaces	SANcora ® BLOCK@Guard Hi-Performance Wall Sealer (Product Code : S/BG/1100)	SANcora ® ROOF@Guard
Sound Surfaces / Previously Painted Surfaces	SANcora ® BLOCK@Guard Alkali Resistant Wall Sealer (Product Code : W/BG/1300)	SANcora ® ROOF@Guard

PERSONAL PRECAUTIONS

The product may irritate eyes and skin. Avoid contact with eyes and skin. In case of eye contact, flush with clean water for at least 15 (fifteen) minutes and consult a physician immediately. Avoid breathing the vapour or mist. Wash skin thoroughly after contact. **DO NOT CONSUME.** Keep out of reach of children and unqualified personnel. Consult the Material Safety Data Sheet for complete product safety information.

SHELF LIFE

2 years at ambient temperature in unopened containers.

WARRANTIES

- **SANcora**® warrants that its products will conform and perform in accordance with the product specification sheets.
- **SANcora**® also warrants its products to be free from defects in material and manufacturing.
- **SANcora**®'s liability to the buyer or any third party for any loss or damage shall not exceed replacement cost, excluding freight and handling of material proven to be defective.
- **SANcora**® agrees to respond to claims of defective material, upon receipt of written notification and verification of product defects. Any claim must be made within 5 (five) days of the discovery of the defect. In no event shall the seller be liable for any consequential or incidental damage or loss of profit.
- **SANcora**® is not liable for variation in environment, application, colour or changes in procedure, which may cause unsatisfactory results.

For further information or if you have any inquiry about this product, please contact the Sales Department at the address below :-

Paint Manufacturer
SYARIKAT SANLAND PAINT INDUSTRIES SDN BHD (19733-1)

Paint Distributor

SANCORA PAINTS MARKETING SDN BHD (716878-P)
Plot 52 & 53, Lorong Kilang 15, Tupai Light Industrial Area, 34000 Taiping, Perak, Malaysia.
Tel : 605-806 8777 (8 lines) Fax : 605-807 4955
Website : www.sancora.com Email: info@sancora.com

THE MARK OF QUALITY

MS ISO 9001 : 2000 Quality Management Systems Certification By :-

